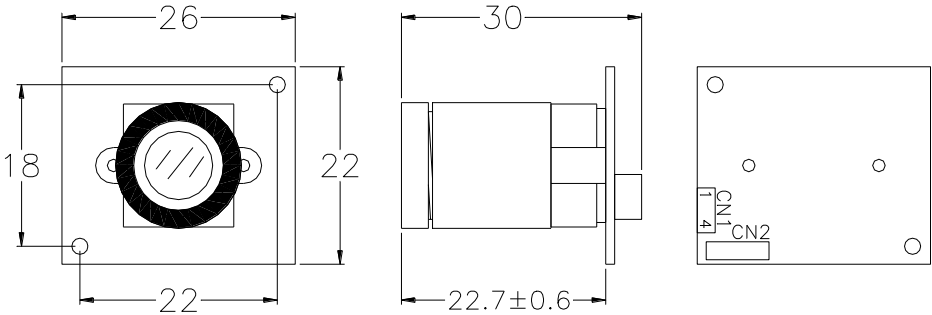


# MTV-54CC0-R COLOR CAMERA INSTRUCTION

Dimension: Unit (mm / ±0.3mm)



CN1

P1 (RED), +12V DC-POWER INPUT

P2 (BLACK), GND

P3 (WHITE), VIDEO OUTPUT

P4 (YELLOW), MIRROR SELECTOR

OPEN-NORMAL

GND- MIRROR

**"Warning!!!** P4 (Mirror pin)

Open or connect to GND only. Shall never connect to +12V, damage will be occurred.

## SPECIFICATION (RoHS Conform)

MODE NO.	MTV-54CC0N-R	MTV-54CC0P-R
TV SYSTEM	NTSC	PAL
IMAGE SENSOR	1/4-inch CCD Image Sensor	
CCD EFFECTIVE PIXELS	512 (H) x 492 (V)	512 (H) x 582 (V)
SCANNING SYSTEM	525 lines, 60 fields/sec	625 lines, 50 fields/sec
SYNC SYSTEM	Internal	
MINIMUM ILLUMINATION	0.5Lux @ F1.2 AGC on	
LENS & VIEW ANGLE	3.6 mm F2.0 / 68° (Option 2.2,2.5,3.0,4.0,6.0,8.0,12.0mm)	
RESOLUTION	400 TVL / 470 TVL (Enhanced)	
SIGNAL TO NOISE RATIO	52dB (MIN) / 60dB (TYP) (AGC OFF)	
WHITE BALANCE	Auto high speed White Balance	
WHITE BALANCE RANGE	3200 --- 15000°K	
AUTO IRIS	A.E.S.	
ELECTRONIC SHUTTER	1/60~1/120,000 sec.	1/50~1/120,000 sec.
VIDEO OUTPUT	1.0V p-p composite video at 75 ohm	
GAMMA CORRECTION	0.45	
MIRROR FUNCTION	ON/OFF switchable	
GAIN CONTROL	AGC	
OPERATION TEMPERATURE	-20°C TO 50°C	
OPERATIONAL HUMIDITY	within 85% RH	
POWER SUPPLY	DC12V / 65mA	

\* The specifications and appearance of the product may be changed without notice.